

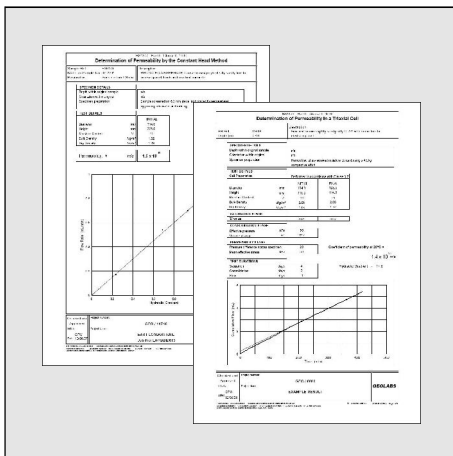


The Facility

- A temperature controlled laboratory (maintained to better than $\pm 2^{\circ}\text{C}$) using the latest electronic data acquisition for 24 hours-a-day, 365 days-a-year testing.
- Multidisciplinary staff experienced in all aspects of soil and rock testing.
- Rapid processing of raw test data using our own in-house developed software to generate reports in printed, PDF and AGS formats.

The Analysis

- Triaxial Permeability (BS1377:Part 6:Clause 6 and WRC Accelerated Method). Particularly suited for landfill site clay liners, BES and other bentonite enriched materials.
- Constant Head Permeability in a Permeameter for non-cohesive material up to 10 mm particle size.
- Horizontal Permeameter (DoT: HA41/90). Used for drainage layer material up to $37\frac{1}{2}$ mm particle size.
- Hydraulic (Rowe) Cell - from 76 mm to 250 mm sizes. Permeability can be measured in either vertical or horizontal directions - excellent for laminated soils.
- Contaminated Materials. A dedicated section can measure contaminated materials and flow liquids other than water (such as sea water, leachates or other permeants).
- Falling Head Permeability.



The Benefits

- Independent testing facility exclusively devoted to commercial and research geotechnical laboratory testing.
- An all-round service of the highest standard backed by a fully documented quality management system.
- High quality testing and results presentation, both of which can be tailored to your requirements.
- We are UKAS Accredited for the Triaxial Permeability and follow fully documented procedures for the other test methods.